

ULTRASONIC FLAW DETECTION

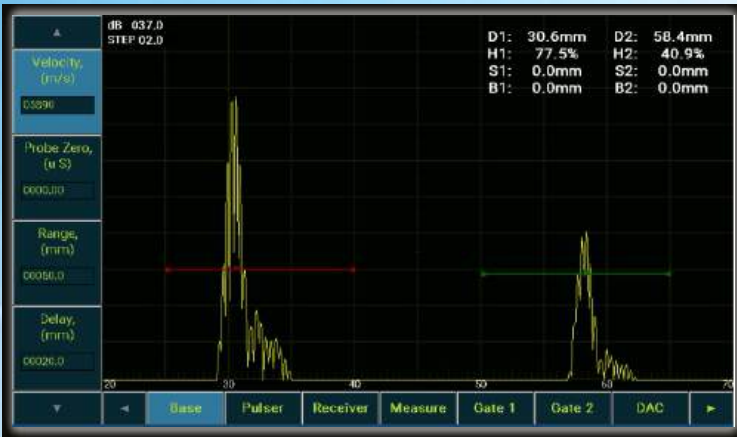
DIGISCAN

DS-702 Lite



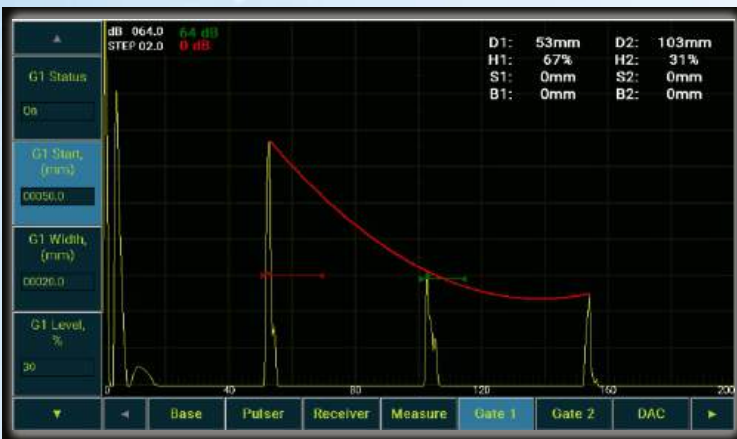
2 MEASUREMENT GATES WITH ADVANCED MEASUREMENT MODES

Two user-selectable gates for flaw detection, decoupling with individual settings for measurement mode, location and alarm settings. Displays trigonometric values for all 2 gates: height (H), depth (D), beam path (B), and surface distance (S).



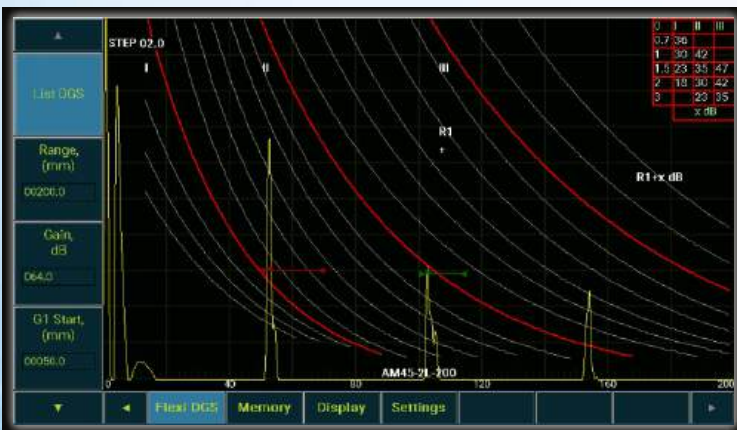
DISTANCE AMPLITUDE CURVE (DAC)

Defect evaluation by plotting upto 15 point custom DAC curve with either a smooth parabolic curve or a simple point-point curve. 6 settable offset curves upto ± 100 dB.



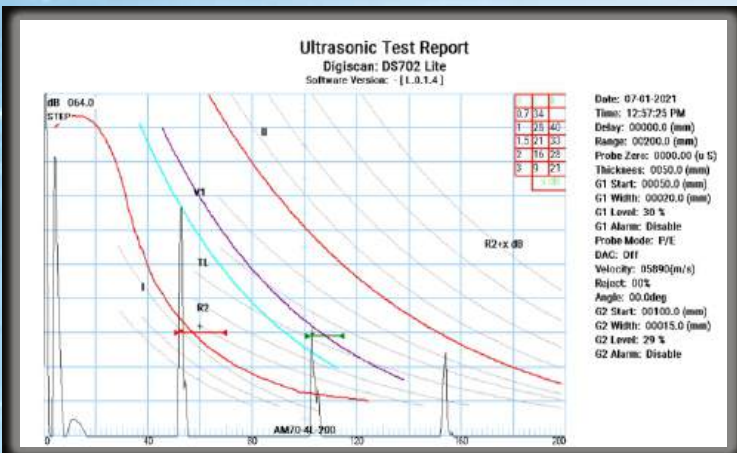
FlexiDGS

Used for comparison & evaluation of echoes against standard DGS curve for a particular type of probe. The DGS curve represents relation between echo height, defect size & distance from transducers. DGS option sets the scale as per the test range, so no more compromising to fixed scale.



CONVENIENT ON-BOARD REPORTING

On-board PDF reporting with custom logo, remarks/job details. Transfer this directly on-site to a flash drive for printing, without a need of a PC software.





Handy Strap For Better Grip & Protection



Large 7inch & High Brightness With Touchscreen Display

Durable Metal stand



IP 66

Rugged Design

Ergonomical Design

Ease Of Operations



DISPLAY	Display Type	7" high brightness LCD with Touch panel
	Touch Screen	Yes
	Scheme	6 preset color schemes
	Display Brightness	1000 nits, variable from 10% to 100%
	Display Update Rate	60 Hz*
	HDMI Video Output	Yes (HDMI supported resolution for Monitor) (1024 x 768*, freq:60Hz)
	Range	10 to 5,000 mm, in 0.1 mm steps
	Velocity	1000 to 10,000 m/s, in 1 m/s steps
	Zero Offset	0 to 1000 μ s, in 0.01 μ s steps
	Display Delay	0 to 3,000 mm, in 0.1 mm steps
	Units	millimeters
	Rectification	Full
	Horizontal Grid	100.00%
	Reject	0% to 99% FSH with visual indication
	A-Scan Freeze	Active freeze, Freeze, Filled
	Live Mode A-Scan	Recalled the saved reference A-Scan pattern to compare during testing
	Full Screen Mode	A-Scan can be displayed in Full Screen area by pressing double Enter Key
Real Time Clock	Date and time for saved records	
Key Sound	Audio Feedback for Touch and Keypress	
<hr/>		
Data Acquisition	Digitizing Frequency	100 MHz
	Data Storage	32 GB SD card
	Single A-Scan Storage	1000 A-Scans be stored, recalled
	Report Generation	On-board PDF report with custom logo, PNG A-Scan
	Calibration Sets	100 Cal sets can be stored and recalled
	Data Export	SD card, USB flash drive
<hr/>		
Receiver	Gain (Dynamic Range)	0 to 100 dB, in 0.1,0.5,1,2,6,12,18,20 dB steps
	Receiver Bandwidth	0.5 to 20 MHz wide band amplifier
	System Linearity	Horizontal: \pm 1% FSW Vertical: \pm 2% FSH

Gates	Measurement Gates	Two user-selectable gates for flaw detection
	Measurement Mode	MaxPeak , j-flank
	Start	0 to 4,999 mm, in 0.1 mm steps
	Width	1 to 5,000 mm, in 0.1 mm steps
	Threshold	0% to 100%, in 0.1% steps
	Alarms (Monitor)	Positive and Negative threshold.
	Alarm Indication	Audio and visual indicators
	Gate Width Zoom	For gates 1 & 2
Measurement Rate	Equivalent to PRF	
<hr/>		
Pulser	Pulser Types (Transmitter)	Spike
	PRF	125 Hz
	Damping	High / Low is selectable, 50 Ω , 400 Ω .
	Test modes	Pulse Echo, Dual
<hr/>		
Instrument Inputs/outputs	USB Ports	USB C - Charging, storage access USB A - Flash drive HDMI Type - Mini HDMI to video output
	Transducer connections	LEMO 00
	SD Card	32 GB
	HDMI	1024 x 768 resolution & frequency - 60 Hz
<hr/>		
Environmental Ratings	IP Rating	IP 66
	Operating Temperature	-10° C to 55° C
	Storage Temperature	-20° C to 60° C
	Battery Recharge Temperature	0° C to 40° C
<hr/>		
Measurements	Trigonometric	Beam Path, Flaw depth, Surface Distance, Height of Gate 1 & Gate 2
	Threshold	Echo height in 1 to 99%
	Trigger	Initial pulse
	Job Thickness	0.1 to 999.9 mm, in 0.1 mm steps
	Refracted Angle	0° to 90°, in 0.1° steps
	DAC	Point-to-point and parabolic curve along with 6 additional curves offset by ± 100 dB each, are provided up to a maximum of a 15-point curve
Flexi DGS	Flexi DGS 16 predefined probe settings and custom probe settings for defect size evaluation.	

General	Overall dimensions (W x H x D)	205 mm x 130 mm x 60 mm
	Construction	IP 66 Compact, Rugged Molded ABS, Soft Touch
	Weight With Battery	1.25kg
	Operation	5 button navigation Keypad + 1 gain key, ambidextrous operation
	Battery Type	Single rechargeable inbuilt lithium-ion 7.4V 40W
	Battery Life	Up to 8 hrs.
	Power Requirements	USB C fast charger, 100 - 240 VAC, 50-60 Hz, 1.5 A
	Warranty	1 year

Test Details	Bump Test	- IEC:60068-2-27
	Resistance to vibration Test	- IEC:60068-2-6
	Tropicalisation and Humidity Test	- IEC:60068-2-30
	Electromagnetic Interference (EMI)Test	- IEC:61000-4-3
	Power frequency magnetic field immunity test	- IEC:61000-4-8
	Equipment Protection IP 65 test	- IEC:60529
	Standard Accessories	USB C 45W Fast Charger 32 GB SD Card
	Optional Accessories	<ul style="list-style-type: none"> • Protective Rubber cover • Palm Strap • Nylon Cover Neck support strap <ul style="list-style-type: none"> • Protective Rubber cover • Palm Strap
	Optional Accessories	<ul style="list-style-type: none"> • Nylon Cover Neck support strap